



August 2021

Monthly Newsletter

[The Alliance Events](#) | [Our Blog](#) | [The Alliance Updates](#)
[News and Resources](#) | [Members in the News](#) | [Provider Updates](#)

The Alliance Events

Virtual Event



The Alliance Fall Symposium & Annual Meeting

Thursday, September 16 | 9:00am - 11:30am

[Register Here](#)

This virtual event will inform employers how using Payment Reform can reduce costs and improve health care safety and efficacy.

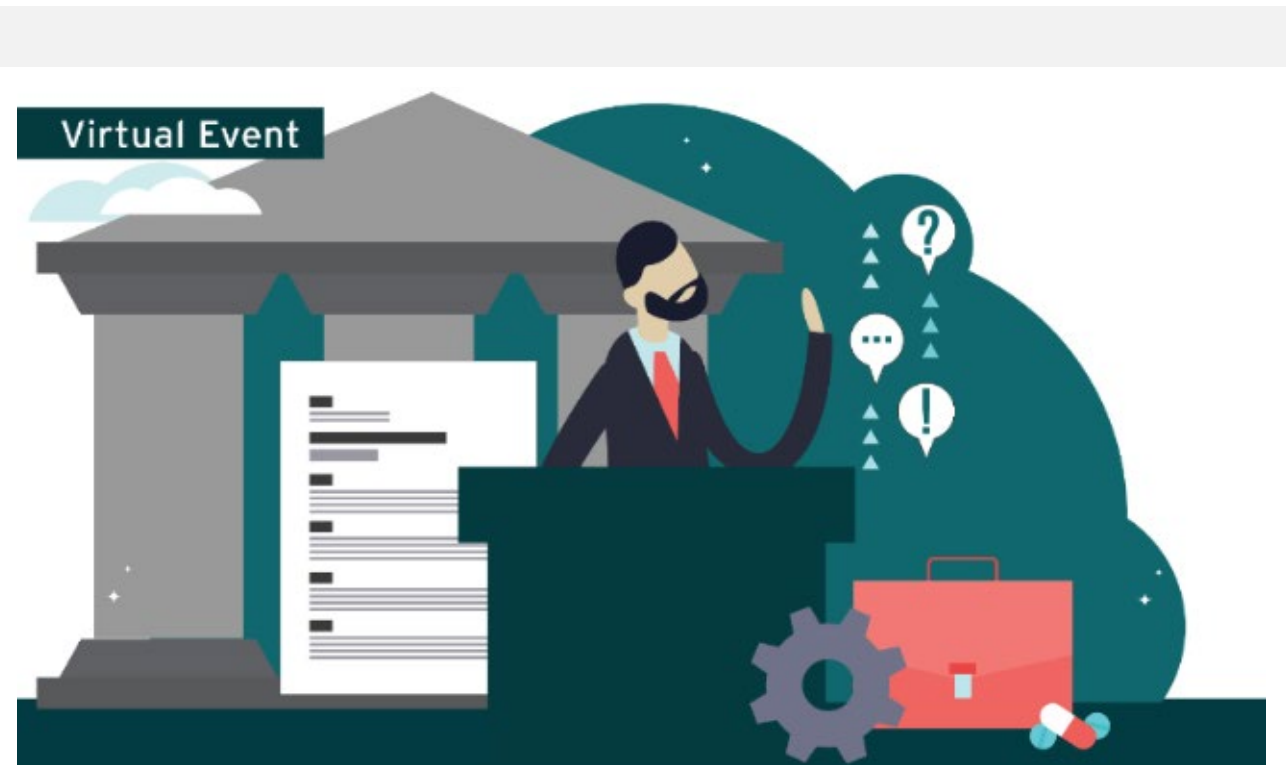
Institute Fellow at Urban Institute, Dr. Robert Berenson, will explain how we can achieve payment reform and reward value over volume of care by creating the right incentives for care delivery.

Dr. Berenson is an expert in health care policy – Medicare, provider payment, and provider market consolidation – and has authored over 100 publications on those topics.



He has experience practicing medicine, serving in senior positions in two presidential administrations, and helping organize and manage a successful preferred provider organization.

[Register Here](#)



Webinar:
**Health Policy Regulation
for Employers**

Thursday, October 14 | 9:00am - 10:45am

[Register Here](#)

This webinar, led by Partner at Quarles & Brady, John Barlament, will focus on the new transparency legislation affecting employers for 2022. Highlights will include:

- No Surprises Act
- Mental Health Parity Report
- Transparency Provisions
- Advanced EOB Provisions
- Affordable Care Act
- Employer Shared Responsibility Rule

John provides practical assistance on a range of employee benefit matters and is author of what is likely the nation's leading manual on the HIPAA privacy and security rules for employee benefit plans, *HIPAA Portability, Privacy & Security*, as well as a leading manual on health reimbursement arrangements and wellness plans, *Consumer-Driven Health Care*. He is a frequent national speaker on employee benefit topics.



[Register Here](#)

Our Blog



[How Self-Funded Employers Use High-Value Health Care To Control Costs](#)

The health care landscape is changing, and employers are driving that change through High-Value Health Care. As a recent PBGH-KFF ...



[Read more](#)



How The Alliance Self-Funded Its Employee Health Benefits Plan

The following is a Q&A with Melina Kambitsi, Ph.D., The Alliance’s Senior Vice President of Business Development & Strategic Marketing ...



[Read more](#)



What Continued Hospital Consolidation Means For Employers

Hospital consolidation – when two or more providers merge – has become a growing concern among employers and other health ...



[Read more](#)

The Alliance Updates

Website Updates

Just a reminder that our website will be undergoing an upgrade soon. Should any functionality be impaired during the update, please know it will be temporary and you will still be able to call or email us.

Email: info@the-alliance.org

Phone: 800.223.4139

News and Resources

New DHS Vaccination Resource

“Our Doctors” is a multimedia campaign that spotlights health care professionals from different health systems and specialties across Wisconsin who share their confidence in the COVID-19 vaccines.

This campaign encourages Wisconsinites who may have questions about vaccines to start a conversation with a health care professional.

You can encourage these important conversations by sharing videos on their [DHS YouTube page](#).

Anyone who may need help finding or choosing a health care provider can visit their [Find a Health Care Facility or Care Provider page](#).

Members in the News

Woodman's, Zimbrick Inc., Steinhafel's Furniture, Capital Physical Therapy and Trek Bicycle among those named in Madison Magazine's "Best of 2021"

[Read More](#)

Provider Updates

The following new providers have been added to **The Alliance Networks**:

Ambulatory Surgery Center

Milwaukee Surgical Suites - Franklin, WI

Behavioral Health

A New Dawn Therapy - Madison, WI

Blue Sky Mental Health - Madison, WI

Bridget Bartlett Counseling - Dubuque, IA

Caravel Counseling & Diagnostics - Multiple Locations, WI

CLB Counseling - Appleton, WI

Eclipse Counseling - Eau Claire, WI

Four Winds Wellness - Eau Claire, WI

Great Lakes Psychology Group - Multiple Locations, IL & WI

Integrated Counseling - Madison, WI

Renee St. Clair Counseling & Consulting - Madison, WI

SaintA - Milwaukee, WI

Wetzel-Rasmussen Counseling Services - Elcho, WI

Chiropractic

Realign Family Chiropractic - McFarland, WI

Clinic

Associated Anesthesiologists - Multiple Locations, IL

How Are We Doing?

Answer one question to let us know!

How likely is it that you would recommend The Alliance to a friend or colleague?

Highly Unlikely

Highly Likely

0 1 2 3 4 5 6 7 8 9 10



To unsubscribe from *The Alliance Newsletter* please click below.

[Unsubscribe](#)

5510 Nobel Dr., Ste 200, Fitchburg, WI 53711