

# Monthly Newsletter

February 28, 2023

[The Alliance Events](#) | [Our Blog](#) | [Partner Survey](#)  
[The Alliance Updates and Resources](#) | [Members in the News](#) | [Provider Updates](#)

## The Alliance Events

### Benefit Programs: How to Choose the Right Partners

**Webinar**  
Thursday, April 13, 2023  
10:00am – 11:30am CST

[Register Here](#)



A robust, high-quality health benefit program can give employers an edge in today's competitive hiring market. Beyond attracting talent, an employer's benefit program is a significant percentage of their budget, and the foundation of what helps employees, and their families stay healthy and productive. But it isn't easy to pull together brokers, TPAs, PBMs, and network partners.

In this session, you'll learn what to look for when choosing benefit partners and hear first-hand from other employers about what they're doing, what they're getting from their benefit partners, and why it matters.

[Register Here](#)

*CE Credits have been applied for.*

Save The Date - May 17, 2023

# Spring Symposium

In person at the Monona Terrace.



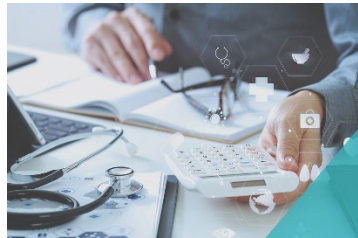
## Our Blog



### Three Alternative Payment Models Reducing Cost and Improving Care

Traditionally, healthcare has been paid with a fee-for-service model where providers are paid...

[Read More](#)



### Value-Based Insurance Design is Driving Change in Healthcare

As healthcare costs continue to rise, payers are turning to innovative strategies, like value-based insurance design (VBID), to improve...

[Read More](#)



### 5 Healthcare Trends to Watch in 2023

Rising healthcare prices, the economic climate, and lingering effects of COVID are leaving employers wondering how they can mitigate costs while...

[Read More](#)

# Partner Survey



The National Alliance of Healthcare Purchaser Coalitions is conducting a survey to understand the perceived performance of services received from behavioral health service providers.

- Key Areas of the Survey
- Equitable Access
- Quality of Care
- Integration of Behavioral Health into Primary Care
- Workplace Mental Health Support

Take Survey

Complete the survey by **March 15** to share your perspective with the National Alliance.

- All responses are confidential.
- Respondents will receive the overall results.
- If you have any questions, please contact Amanda Green ([agreen@nationalalliancehealth.org](mailto:agreen@nationalalliancehealth.org)).

## The Alliance Updates and Resources

### Low-Cost Imaging

**MH Imaging** will be opening a new location in Middleton, WI and will begin scheduling patients March 1st, 2023. With the new addition, this provider will have three locations in the Milwaukee area.

The Middleton facility is a free-standing imaging (FSI) center that will provide MRIs, CTs, X-Ray and Ultrasound services with new state-of-the-art equipment.

Standard pricing will be as listed below.

- MRIs: \$625
- CTs: \$325
- Ultrasound: \$325

- X-Rays: \$100

The addition of this provider will provide even more low-cost imaging options.



## Now Accepting 2023 Healthcare Transformation Award Nominations

We're accepting nominations for the 2023 Healthcare Transformation Awards! Do you know an employer, organization, or individual who demonstrated extraordinary commitment to, or achievement in, transforming healthcare? (You can also nominate yourself.)

[Nominate Someone Today!](#)

## Provider Updates

### Behavioral Health

- Affirmed Family Psychotherapy - Fitchburg, WI
- Clear Path Therapy - Onalaska, WI
- I am Autism - Madison, WI
- Journey to Wholeness - Prentice, WI
- Kayres Counseling - Multiple locations in Menomonie, WI
- Midwest Center for Human Services - Madison, WI
- Winding Rivers Counseling - Eau Claire, WI

### Clinic

- Empower Physical Therapy - Rice Lake, WI
  - Kyte River Emergency Physicians - Rochelle, IL
  - Oak Medical - Waukesha, WI
  - Physical Therapy of Milwaukee - Multiple locations in Milwaukee, WI
  - The Joyful Mind - Marshfield, WI
-

## How Are We Doing?

Answer one question to let us know! How likely is it that you would recommend The Alliance to a friend or colleague?

Highly Unlikely

Highly Likely

0 1 2 3 4 5 6 7 8 9 10



5510 Nobel Dr, Suite 200, Fitchburg, WI 53711

© 2023 The Alliance [Contact](#) [Privacy Policy](#)